

# TWO-SHAFT SHREDDERS - DRD

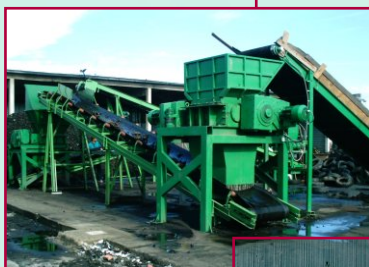
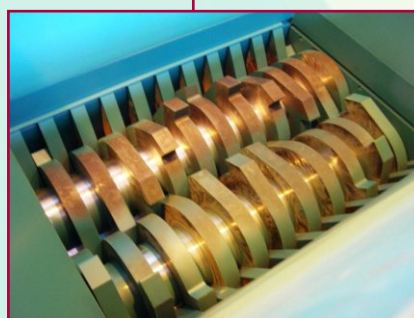
Type: DRD 840, 1160, 1300, 1670

We can deliver for industrial shredding of the waste the two-shaft, two-motor DRD shredders. In these slowly running equipments the waste is cut between the segments, being placed on two rotors. The rotors are rotating against each other and so the waste is shredded. The output is pieces or strips of the waste in accordance with widths of the segments.

The operation of the shredder is checked by the reverse automatics, switching the shredder off in case of an overload and performing the reverse motion and switching the shredder to the shredding regime again. The automatics also secures the continual starting of the shredder and a possible starting of the input and output conveyers.

The segments of the shredder are made from tool steel. For each segment an independent forging is applied. After the thermal processing, the segments are being ground. The shear clearance between the opposite segments is about tenths of millimetres.

The volume of the waste is going to be decreased by shredding 3-10 times. The capacity of shredding differs in accordance with the shredded waste and the widths of the segments. For DRD shredder is capacity 2,5 - 5 tons per hour.



We produce the shredders on the CNC-machines. The output inspection secures the quality of individual components. The stand and feeding hopper are construed with regard to the inclusion of the shredder into the whole complex.

As for the waste of a large volume, the shredder can be equipped with down-pressure.

**Shredder is set for industrial scrapping of:**

Paper, carton, tires, communal waste, furniture, waste for incinerating plants, ...

Type	Working area [mm]	Segment width [mm]	Power input [ kW ]	Weight [kg]
<b>DRD 840</b>	840 x 800	52, 72	2x22, 2x30	4500
<b>DRD 1160</b>	1160 x 800	52, 72	2x22, 2x30	5200
<b>DRD 1300</b>	1300 x 800	52, 72	2x22, 2x30	6000
<b>DRD 1670</b>	1670 x 800	72	2x22, 2x30	6700